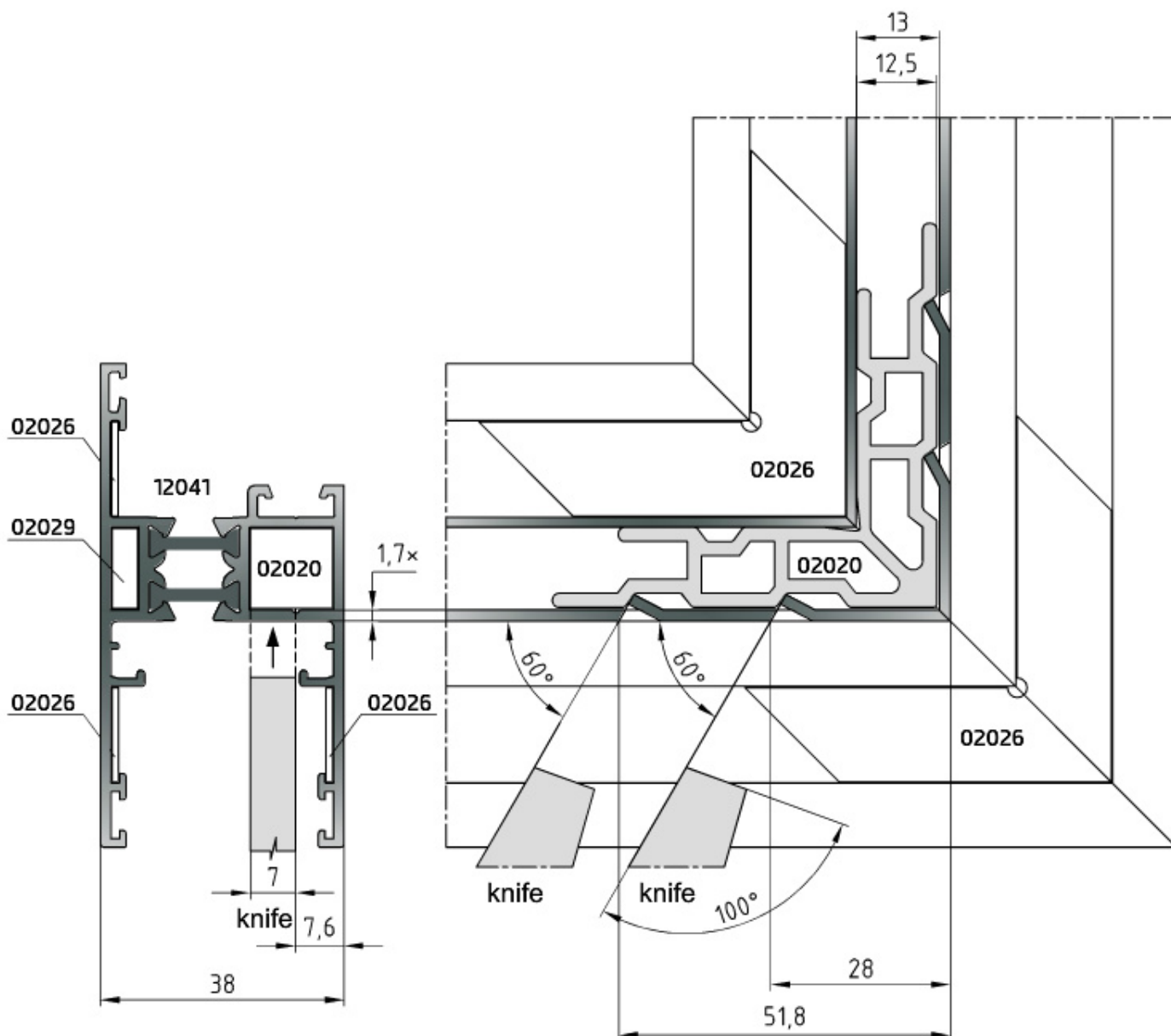


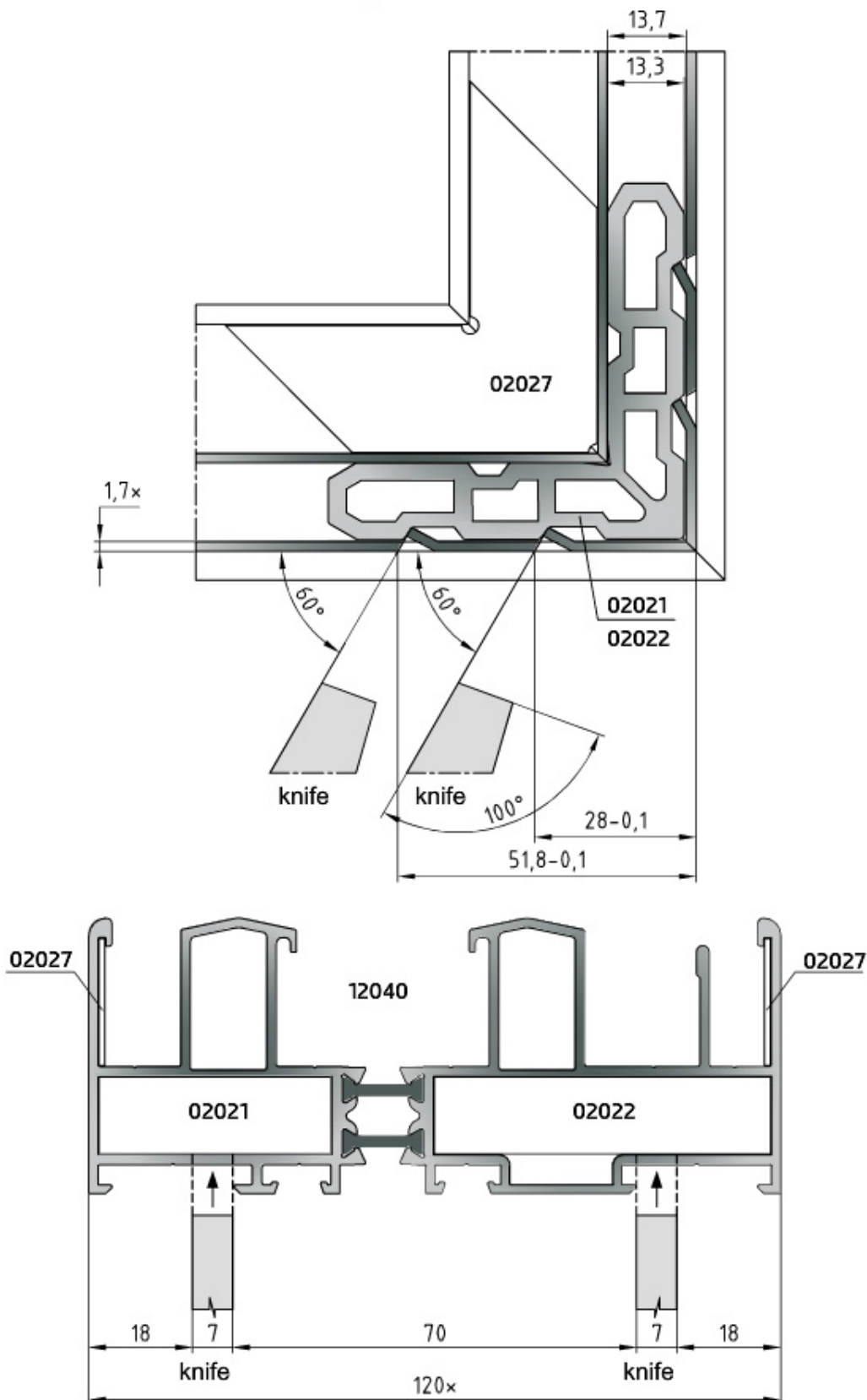
## Assembly of the sash 12041



Angle liners should be lubricated with polyurethane adhesive before assembly of the sash.

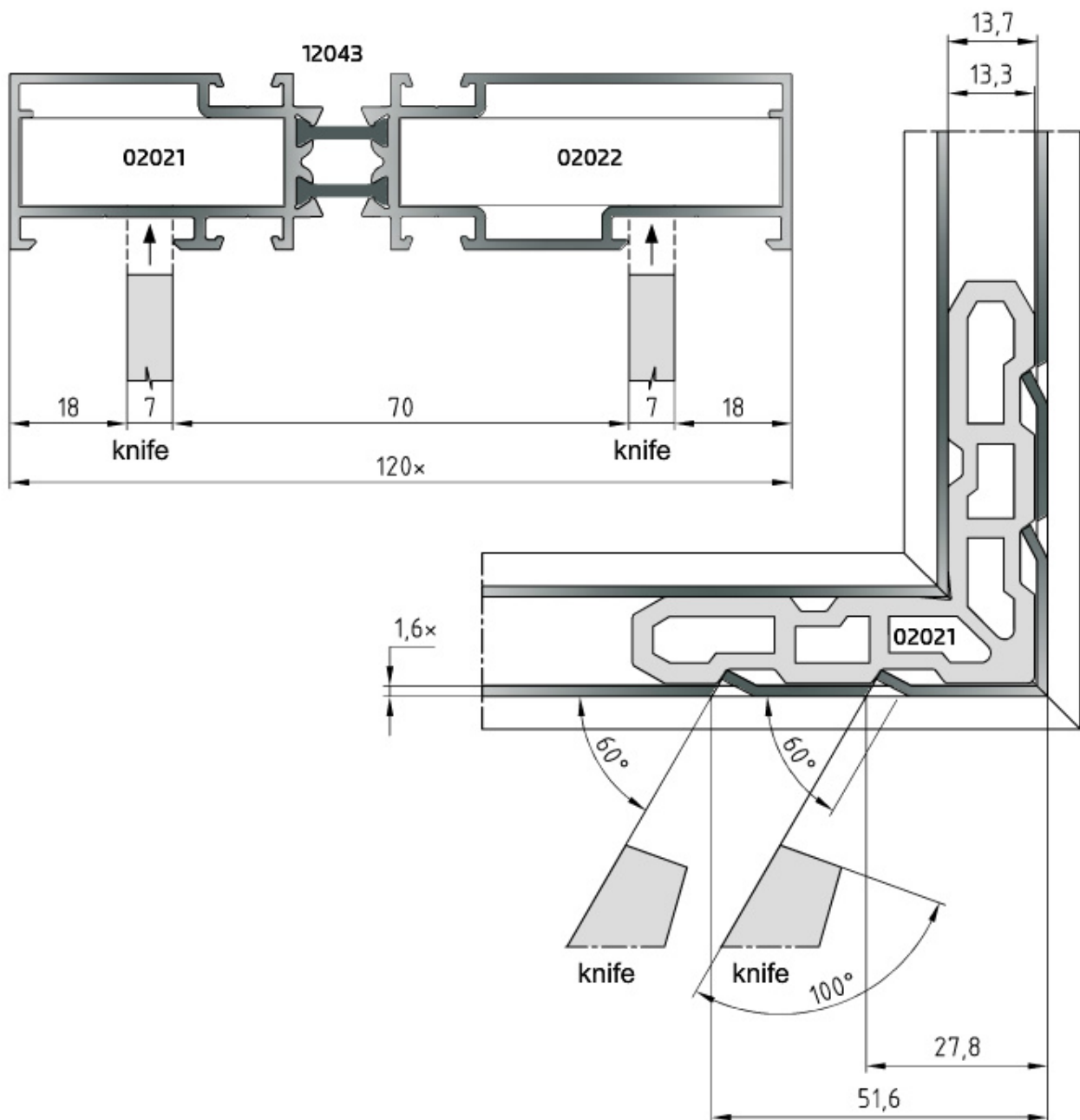
Assembly of the frame 12040

Angle liners should be lubricated with polyurethane adhesive before assembly of the frame.



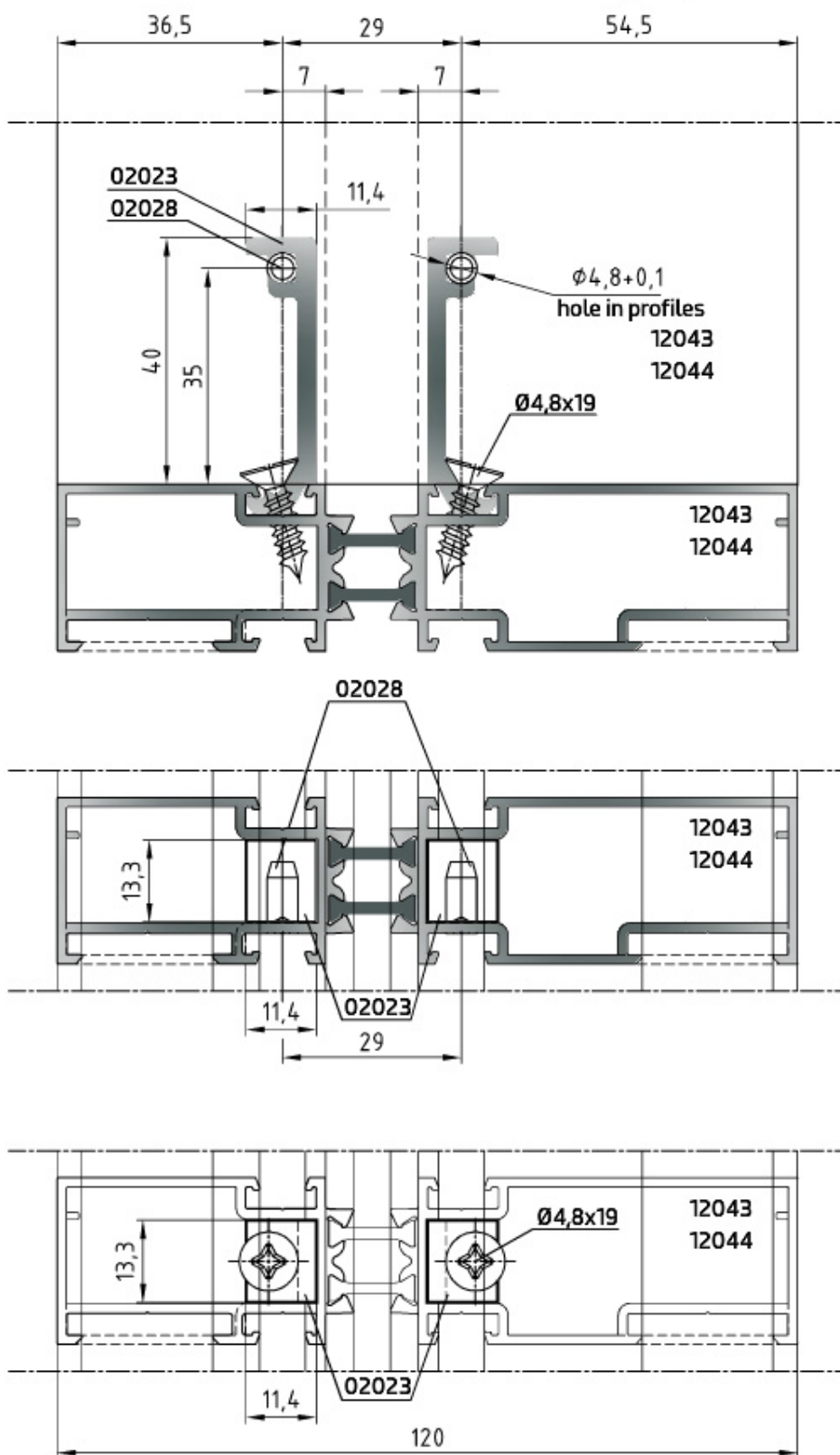
## Assembly of the frame 12043

Angle liners should be lubricated with polyurethane adhesive before assembly of the frame.



**Assembly of the frame 12043 or 1244**

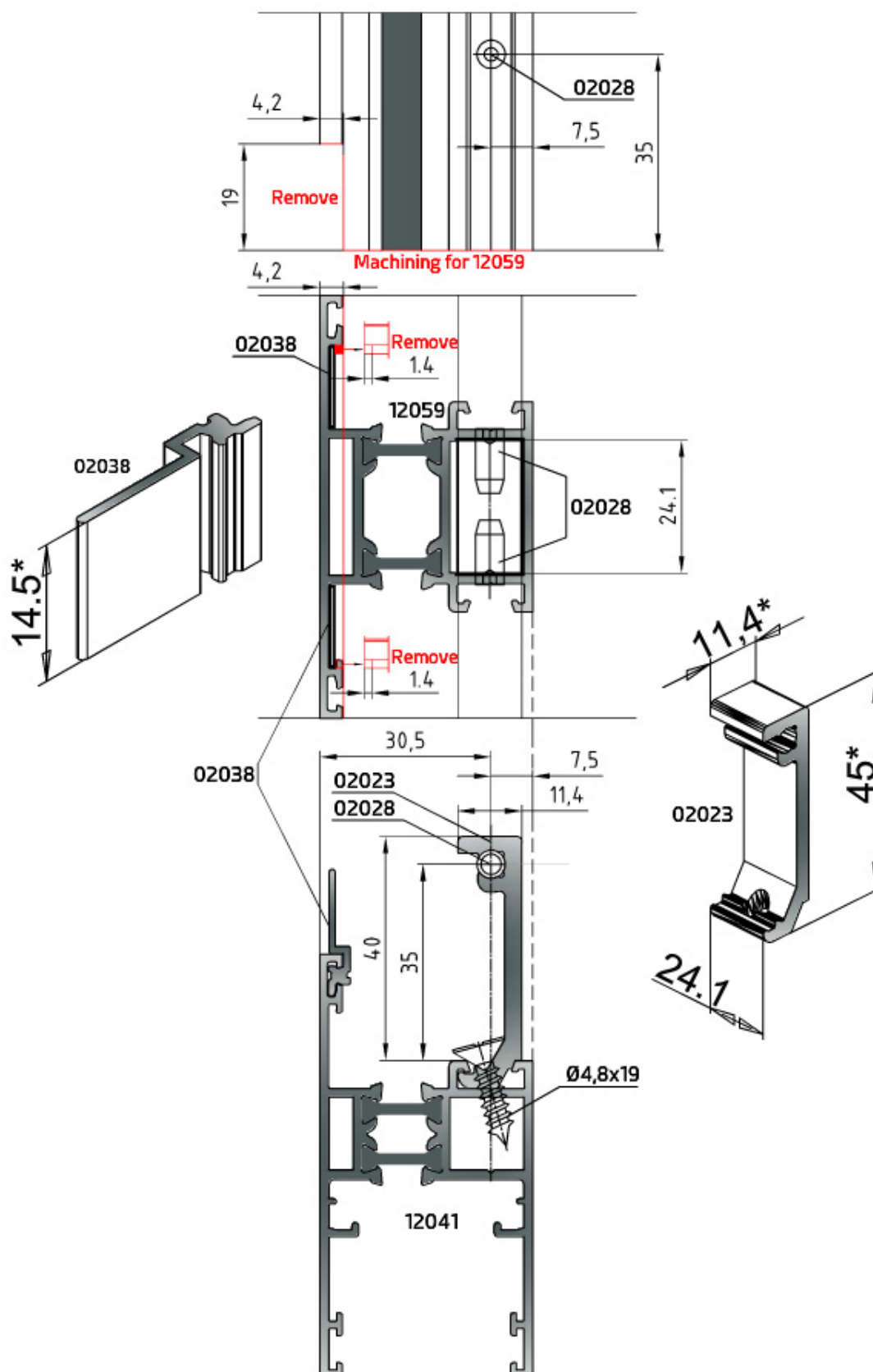
**Insert 02023 for connection under 90 degrees**



Inserts should be lubricated with polyurethane adhesive before assembly of the frame.

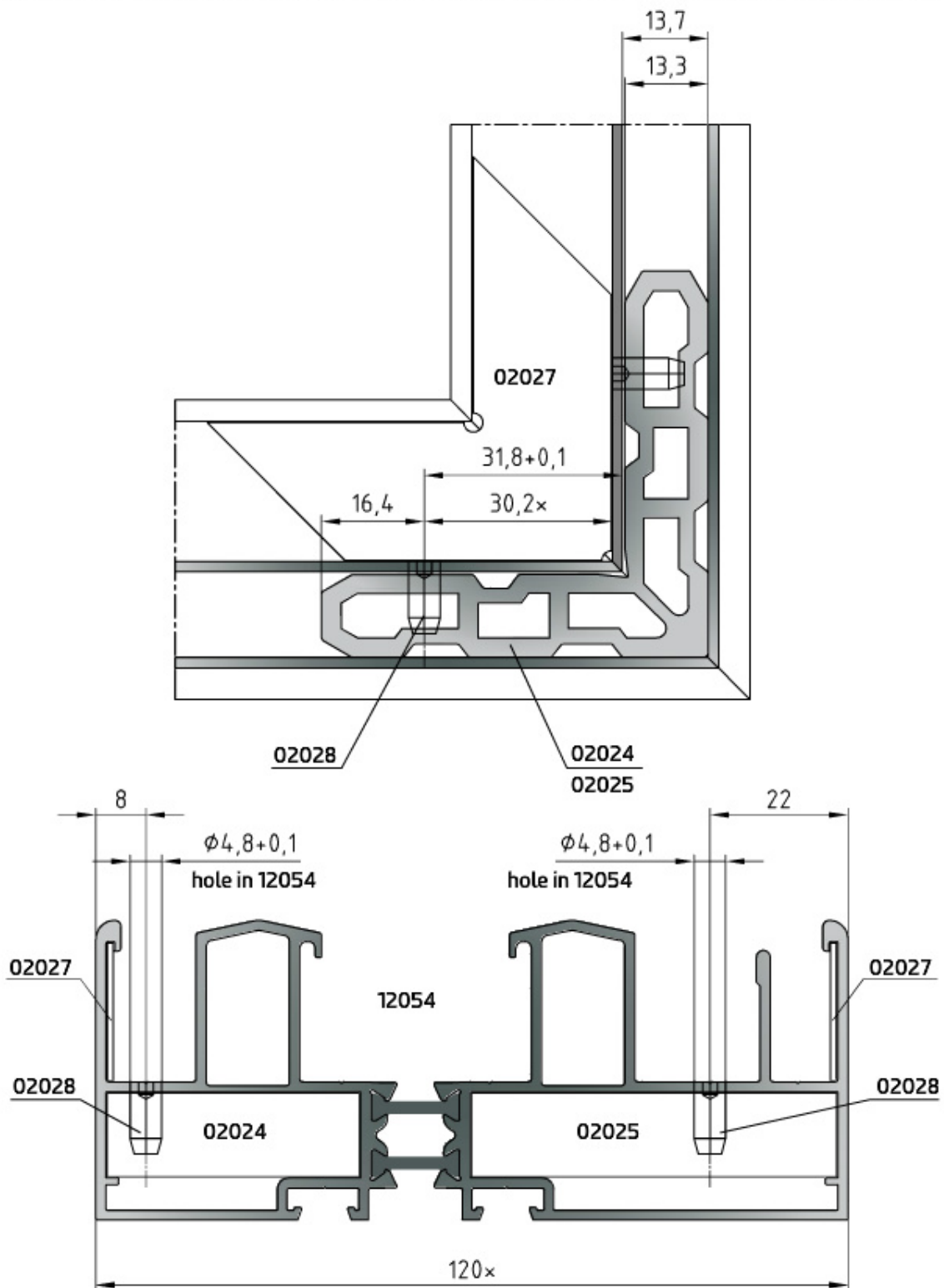
## Assembly of the sash divider 12059

Insert 02023 for connection under 90 degrees



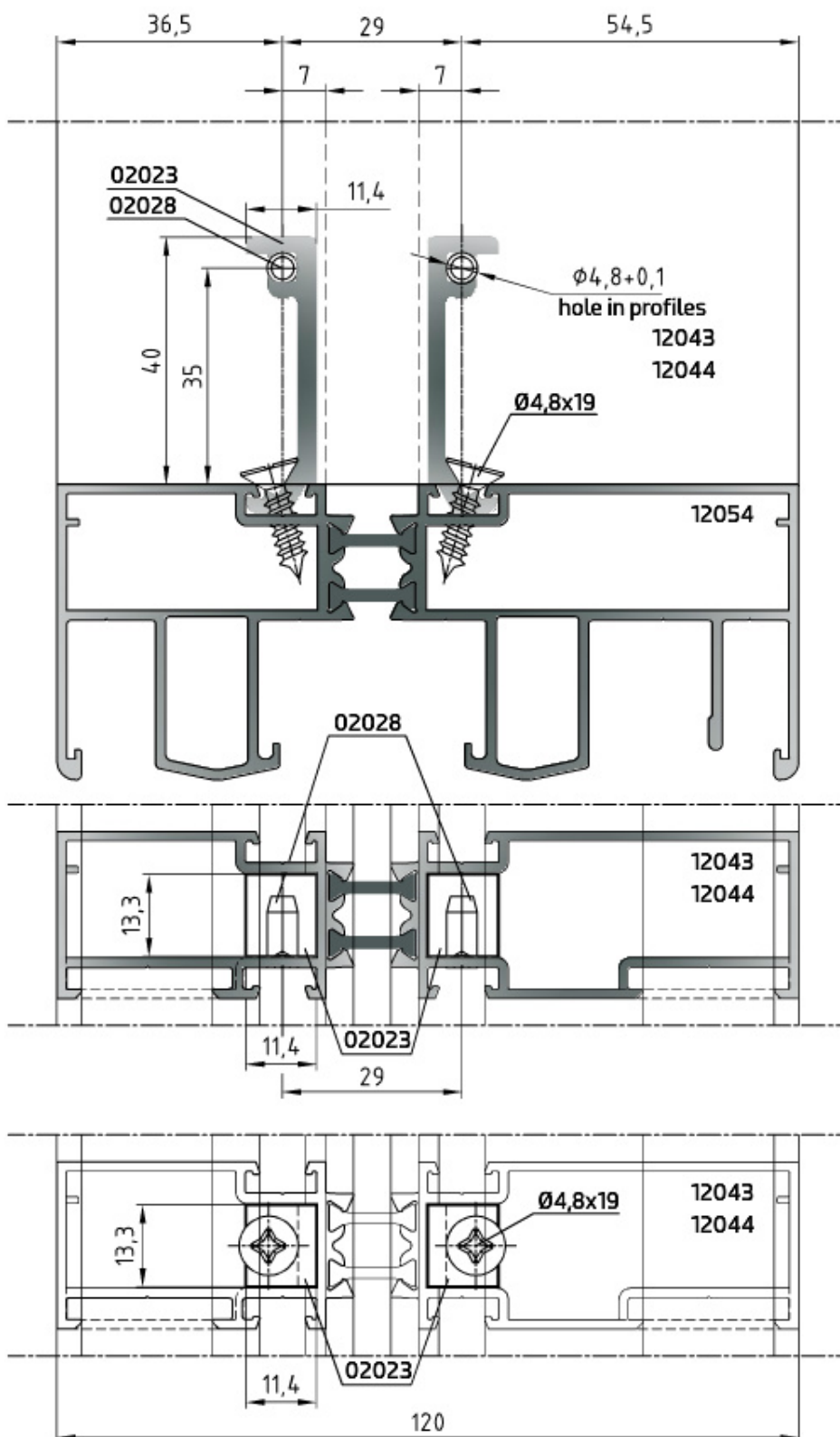
### Assembly of the frame 12054

Angle liners should be lubricated with polyurethane adhesive before assembly of the frame.



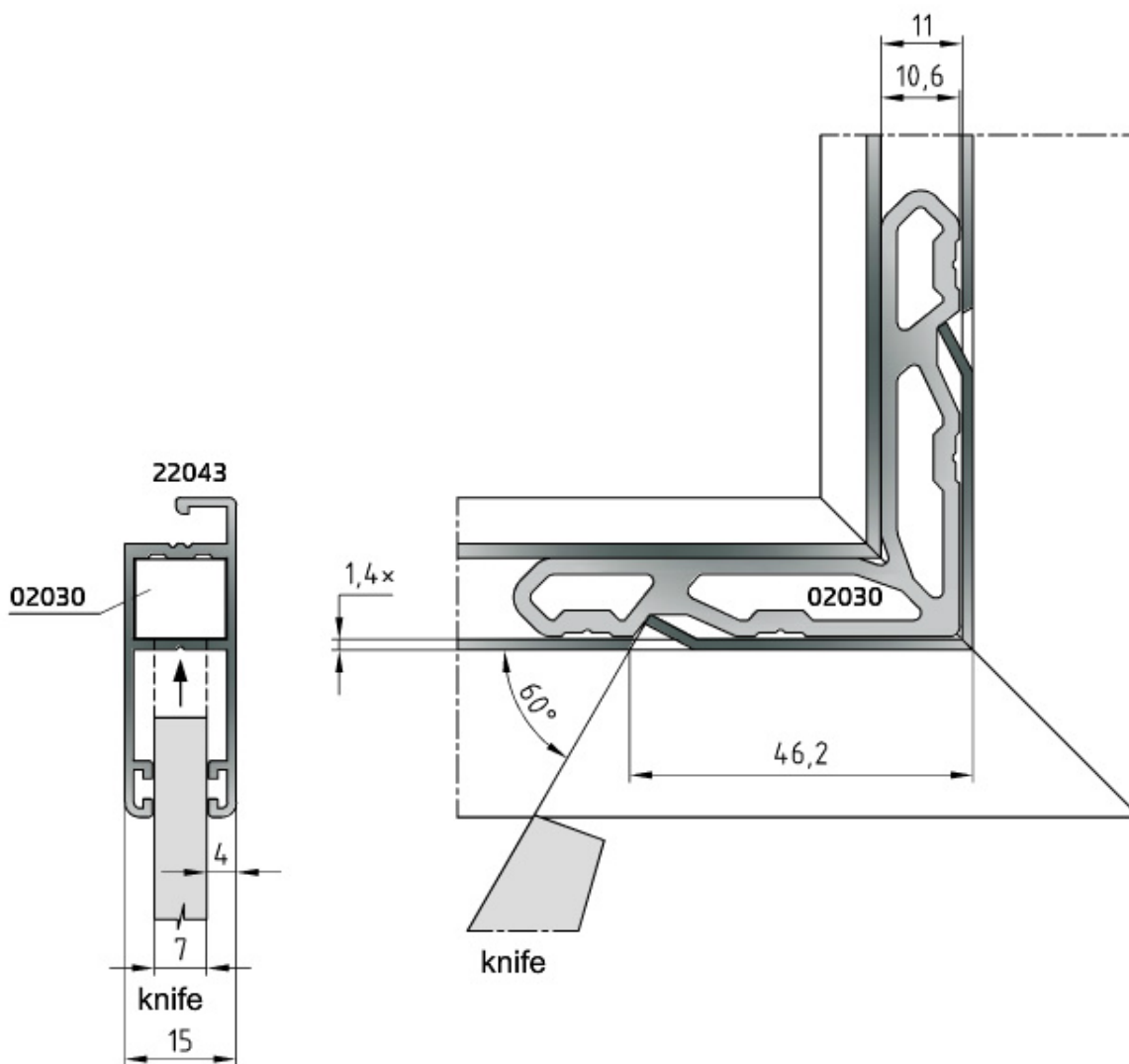
## Assembly of the frame 12054 and the impost 12043 or 12044

Insert 02023 for connection under 90 degrees



Inserts should be lubricated with polyurethane adhesive before assembly of the frame.

**Assembly of the sash 22043**



Angle liners should be lubricated with polyurethane adhesive before assembly of the sash.



## Assembly of the frame 12053

Angle liners should be lubricated with polyurethane adhesive before assembly of the frame.

