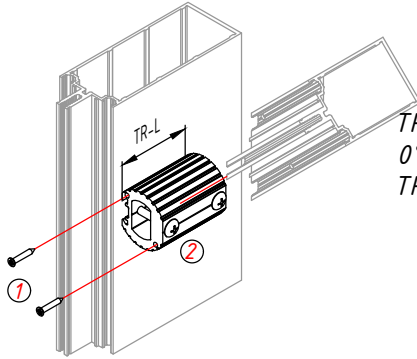
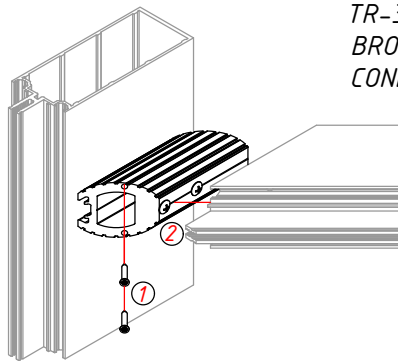


ACCESSORIES TRANSOM ASSEMBLY



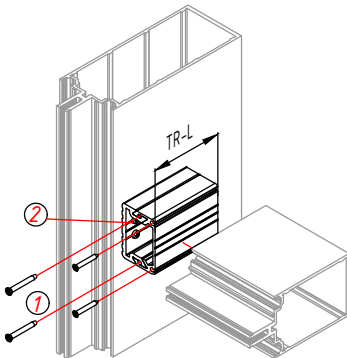
TR-2
0°-15°-30°-45°-60°-75°-90°
TRANSOM CONNECTOR

No.	SCREW	TYPE
1	Φ3.9x28mm	ISO 7050
2	Φ5.5x52mm	ISO 7049



TR-3
BROKEN FACADE TRANSOM
CONNECTOR

No.	SCREW	TYPE
1	Φ3.9x28mm	ISO 7050
2	Φ5.5x52mm	ISO 7049



TR-1
90° TRANSOM
CONNECTOR

No.	SCREW	TYPE
1	Φ3.9x35mm	ISO 7050
2	Φ5.5x25mm	ISO 7049

CONNECTOR	CONNECTOR	TRANSOM	BOX SIZE	TR-L
15107+15108	15050	15040	50 mm	38.8
15107+15108	15050	15054	70 mm	58.8
15107+15108	15050	15055	84 mm	72.8
15107+15108	15050	15041	100 mm	88.8
15107+15108	15050	15056	110 mm	98.8
15107+15108	15050	15057	120 mm	108.8
15107+15108	15050	15058	142 mm	130.8
15107+15108	15050	15039	156 mm	144.6
15107+15108	15050	15043	170 mm	158.8
15107+15108	15050	15042	221 mm	207.8

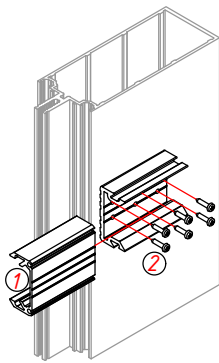
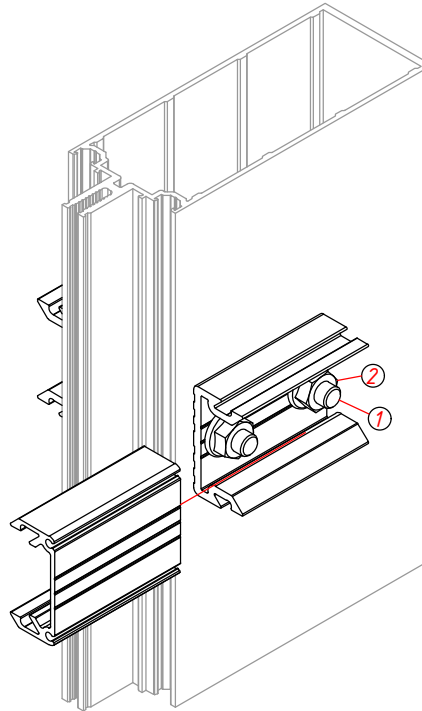
NOTE: TR-L = Connector cut length -0.4/-0.2 mm gap

Accessories

ACCESSORIES TRANSOM CONNECTION

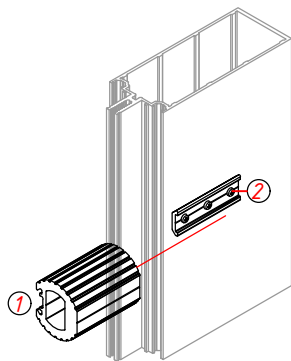
No.	SCREW	TYPE
1	M10x1.5x65mm	ISO 4014
2	M10x1.5-nut	ISO 4032

TR-1-ST
STANDARD TRANSOM
CONNECTOR



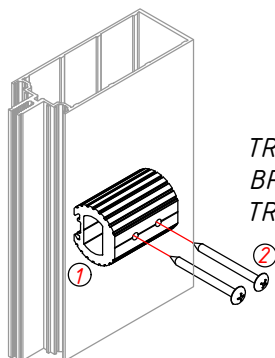
TR-1
STANDARD TRANSOM
CONNECTOR

No.	SCREW	TYPE
1	φ3.9x35mm	ISO 7050
2	φ5.5x25mm	ISO 7049



TR-2-ST
BROKEN FACADE
TRANSOM CONNECTOR

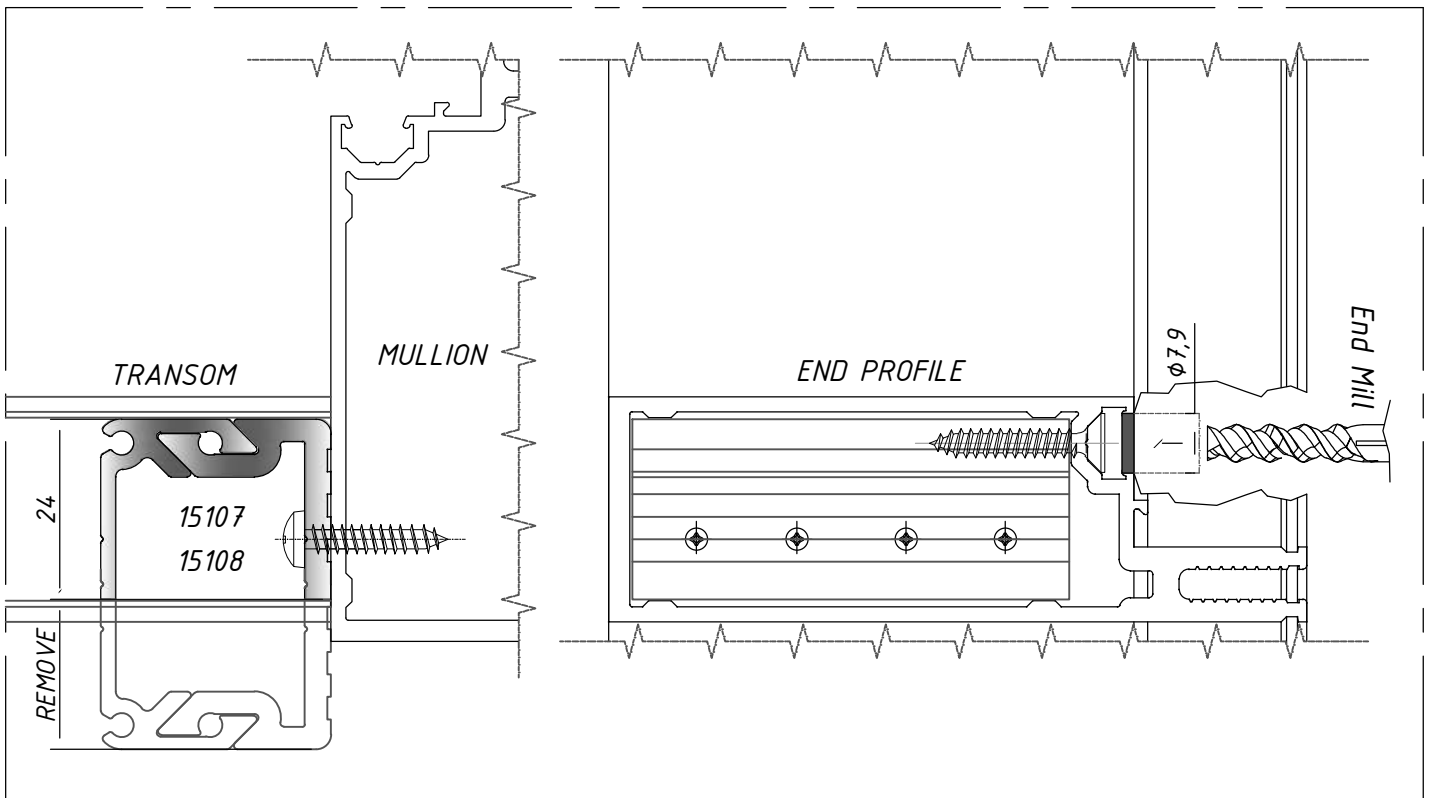
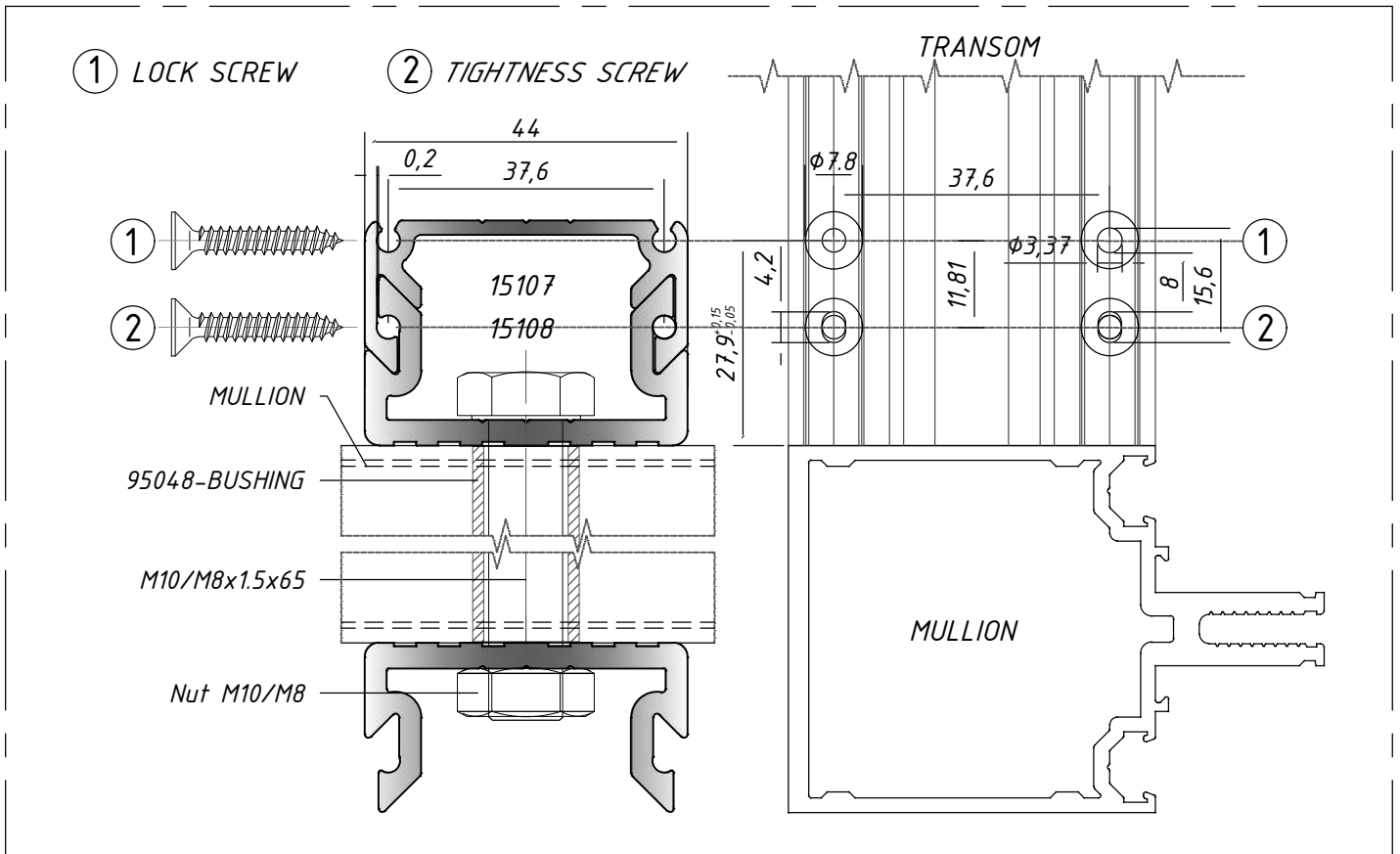
No.	SCREW	TYPE
1	φ3.9x28mm	ISO 7050
2	φ5.5x25mm	ISO 7049

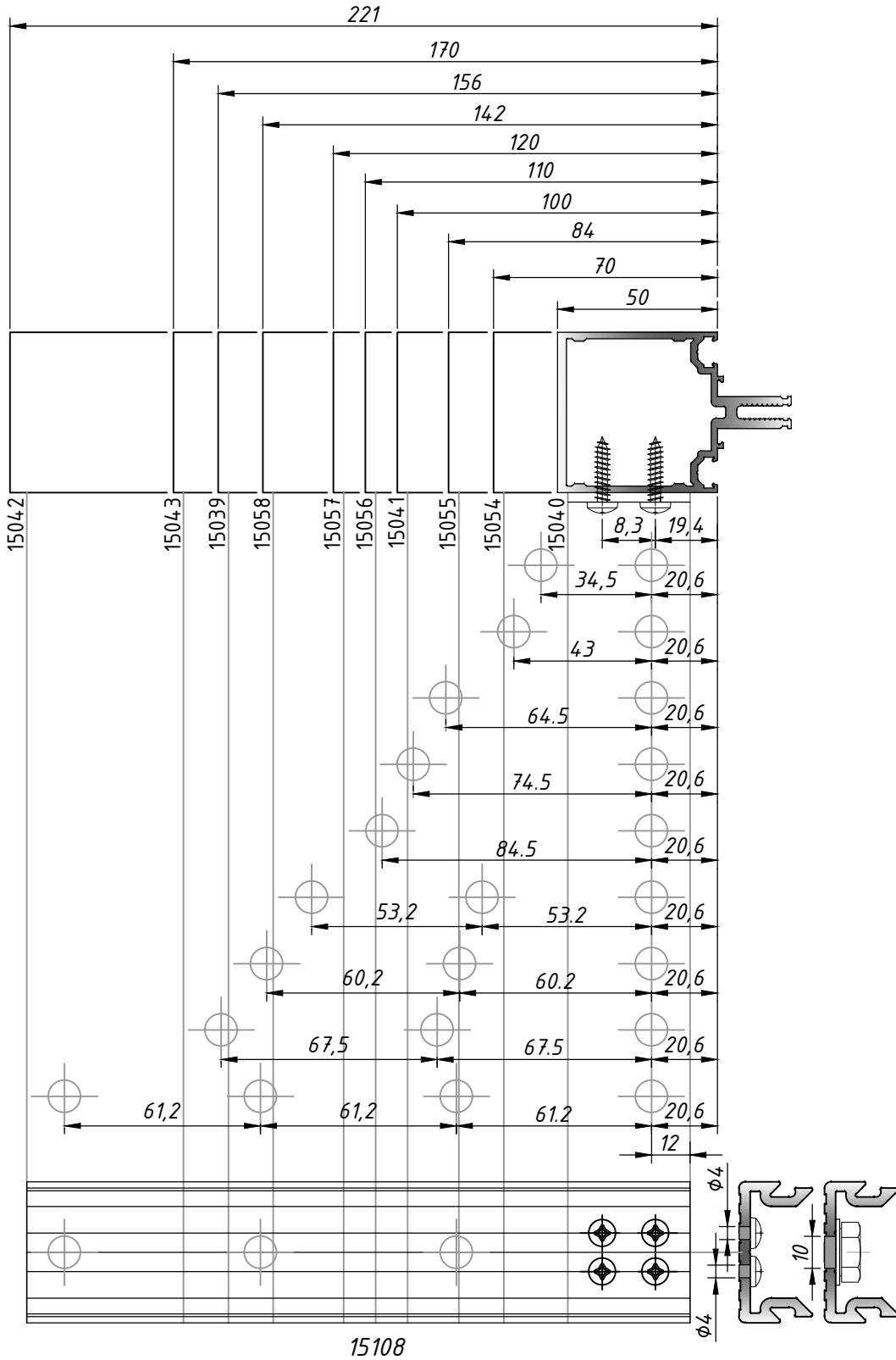


TR-2
BROKEN FACADE
TRANSOM CONNECTOR

No.	SCREW	TYPE
1	φ3.9x28mm	ISO 7050
2	φ5.5x52mm	ISO 7049

Transom connector





Rotary transom

